

KHDN

UNICORN BLOOD



ENGINEERED BY ANTONIN SALVA
SALVATION AUDIO

USER MANUAL

Unicorn Blood is is an Octave Fuzz like no other: trippy, hyper-versatile, a true miracle worker. It's retro at heart, taking an iconic sound of an unforgettable era and beaming it straight into 2018. The design uses discrete transistors and germanium diodes for an authentic vintage fuzz tone with modern features like True Bypass, Octatone and separate EQ controls.

Step aboard a rainbow-colored sonic ride, expand your creative horizon and harness the rush reserved for those who partake of Unicorn Blood.

DIRECTIONS

Brew yourself a cup of the Unicorn Blood Espresso Blend. Locate the input and output jacks on Unicorn Blood and make sure there is 9V power flowing through. the Start your Unicorn Blood with the controls at 12 o'clock and all the switches set to the "up" position. Start off with your amp in clean mode.

Run an instrument cable from your guitar to the Unicorn Blood input jack. Run another instrument cable from the output jack of your Unicorn Blood to the input jack of your amp.

To engage the Unicorn Blood, press or step on the footswitch until led is illuminated. Adjust your pedal volume to match your amp or your desired boost level. Dial in your desired settings by adjusting the Unicorn Blood knobs and switches to shape your individual tone. Feel the power of the unicorn cascade through you. You are now one with the universe.

SPECIFICATIONS

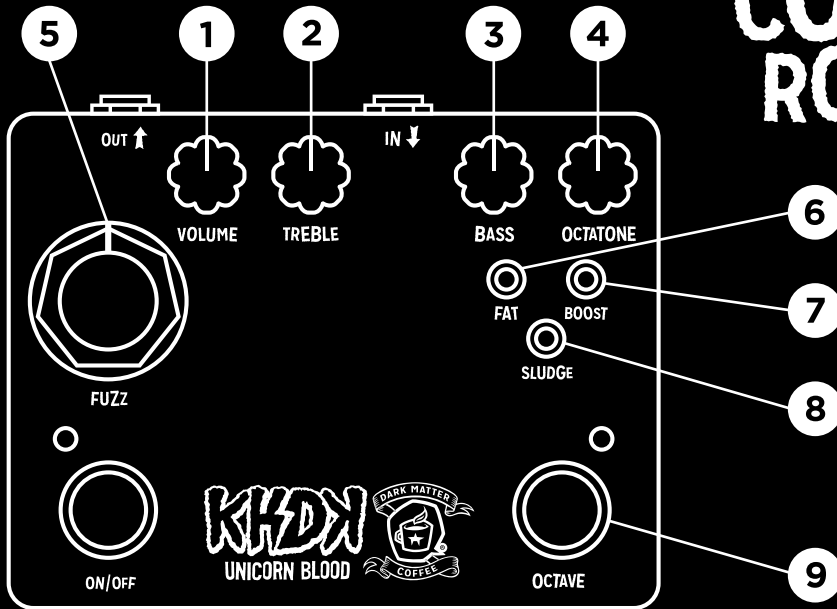
| | |
|-------------------------|---|
| Bypass mode | True Bypass |
| Dimensions | 111 x 85 x 40 mm deep (Width x Depth x Height) |
| Input Connector | Type Standard ¼" jack - mono/TS |
| Output Connector | Type Standard ¼" jack - mono/TS |
| Power Input | Standard 9V Battery or 9V DC (center negative) power supply |

SUPPORT

For any questions or comments please drop us a message at support@khdkelectronics.com

WWW.KHDKELECTRONICS.COM

CONTROLS



1 VOLUME

Controls the overall output volume of Unicorn Blood.

2 TREBLE

At 12 o'clock, this control doesn't modify your tone. Turned clockwise, it boosts your highs; counterclockwise, it cuts them. The frequency range is carefully chosen to offer you the best performance.

3 BASS

At 12 o'clock, this control doesn't modify your tone. Turned clockwise, it boosts the bottom end; counterclockwise it cuts the bass.

4 OCTATONE

Emulates the **TONE** knob on your guitar by removing the unwanted shrill overtones high octaves can have, which is an issue for many players. You can pre-set it and it will activate in octave mode. The **OCTAVE** circuit works best with a neck pickup and the tone control set to low.

5 FUZZ

Sets the amount of fuzz, from less gainy to fuzzier.

6 FAT

Is designed to shift EQ curve of **BASS** and **TREBLE** controls. IT gives you a fatter tone with stronger singing mids. When **FAT** is set to OFF, it becomes more scooped.

7 BOOST

This switch offers a gain boost. Switch it On or Off according to your taste, pickups and mood.

8 SLUDGE

This unique control adds loads of massive bottom end in the Pre-distortion section.

9 OCTAVE

This stompswitch activates the **OCTAVE** mode.